

1A Old Haymarket 73-89 Victoria Street, Liverpool, L1 6AF  
Tel: 0151 305 2577  
Email: [liverpoolsales@ascendproperties.com](mailto:liverpoolsales@ascendproperties.com)  
[www.ascendproperties.com](http://www.ascendproperties.com)

# Ascend

Built on higher standards



## 15 Mann Island, Liverpool

£1,200

Video/Virtual Tour Available

Now's your chance to live in one of Liverpool's most stunning and iconic developments situated on the city's famous World Heritage Site. This fully furnished, luxury apartment offers the perfect living space for working professionals and is definitely not one to be missed out on.

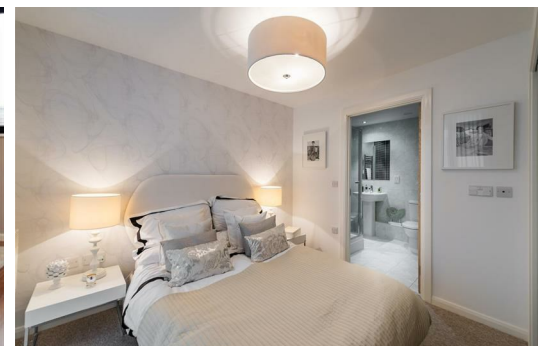
Take a step inside and you'll find a stunning and bright interior, with an ultra-sleek open-plan kitchen/lounge and huge windows which let in plenty of light. This entire space is perfect to relax with friends and entertain guests, and has been fitted with the highest quality fixtures and fittings - apartments really don't get much more stylish than this. Journey down the corridor and you'll find the bedroom which has oodles of space, plush carpets and ambient lighting - the perfect haven to relax. The bathroom is top-notch too, with a glossy tiled design, sleek modern shower, spotlight and shiny fixtures.

Situated just off the Strand, along Liverpool's stunning waterfront, this apartment is perfectly placed right in the heart of the city, close by to a wide range of amenities, from bars, restaurants and cafes to sporting venues, galleries and museums. There's no shortage of things to do and see. You're also close by to Liverpool's business district as well as just a stone's throw away from Liverpool ONE, a renowned £1 billion shopping and leisure complex. How great is that?

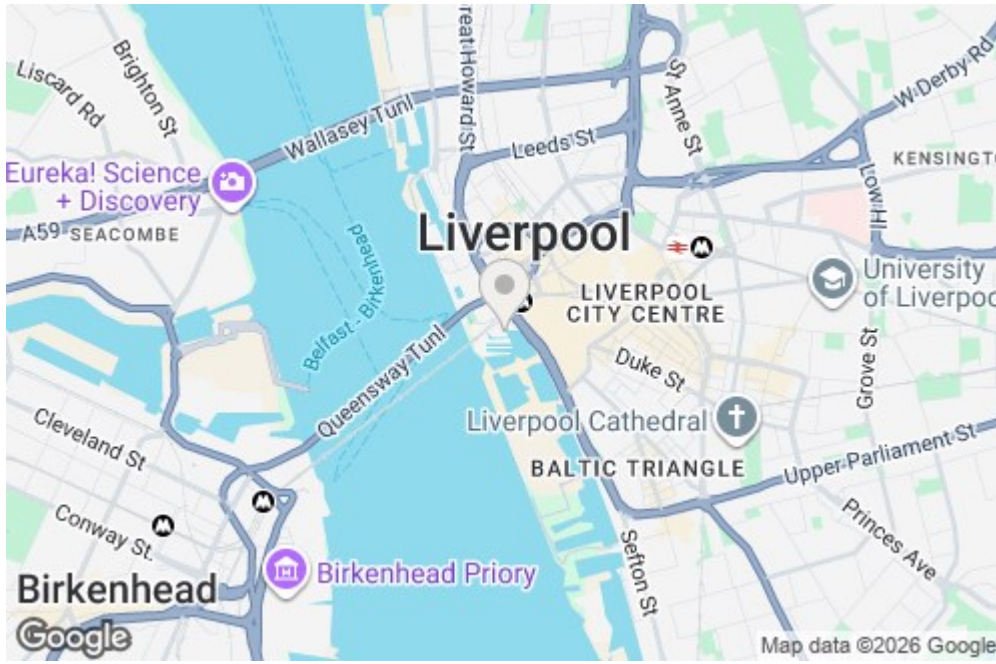
If you're interested in having a closer look, or have any questions, do get in touch. And just so you know, the pictures for this apartment are for marketing purposes only, so the internal fixtures, fittings and furnishings may vary.

Allocated Parking Space Included

\*Available 17th June 2026\*



401 11 Mann Island, Liverpool, Merseyside, L3 1ER



Energy Efficiency Rating		Environmental Impact (CO <sub>2</sub> ) Rating	
Current	Potential	Current	Potential
85	92	B	B
78	85	C	C
72	78	D	D
65	72	E	E
58	65	F	F
52	58	G	G